

STAFF

Jane Arntzen Schumacher, Executive Director

Taylor Boylan, Lead Eligibility Specialist

Ashley Callison, Pyramid Model Coach

Tammy Christofferson, CACFP Coordinator

Nicole Edmonson, Administrative Assistant

Kami Ryles, Operations Manager

Britta Sekora, CACFP Monitor

Sara Silva, Pyramid Model Coach

Kristy Farriester, Eligibility Specialist

Adrianna Poff, Eligibility Specialist

Gaby Loeza, Executive Assistant

Rose Heider, Development Coordinator

Kristin Horn, MT Project LAUNCH

Brandi Thomas, Helena Professional Development Coordinator

Tori Sproles, Bozeman Professional Development Coordinator

Lakyn Smith, Referral/Intake Specialist

Ashley Schools, Pyramid Model Coach



Board of Directors

Heather Grenier, President, Kimberly Wertz, Treasurer, Jen Vero, Secretary, Sandy Osborne, Lindsay Dodge, Zach Dorow, George Haynes, Molly Litzen, Frank Smith, Kelly Seymour, Mary Bolick

Board meetings were held: 11/17/16, 1/18/17, 2/16/17, 3/16/17, 4/20/17, 5/18/17, 6/15/17, 8/24/17, and 9/20/17. Annual Meeting Date: 6/8/2017

Serving Gallatin, Lewis & Clark, Park, Meagher, Broadwater, and Jefferson counties.

1143 Stoneridge Dr., Suite 1
Bozeman, MT 59718

901 N Benton Ave
Helena, MT 59601

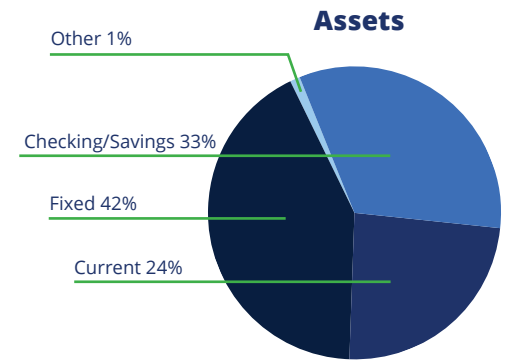
406-587-7786
800-962-0418
406-587-1682 fax
www.cccmontana.org

EIN# 36-3779018

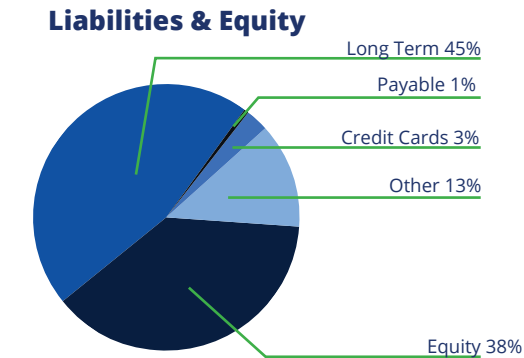
ANNUAL REPORT



Child Care Connections advocates for the well-being and quality care of children by supporting early childhood professionals, families and the communities we serve.



Total Assets \$635,605.66



Total Liabilities & Equity \$635,605.66

Testimonial

I was in a very vulnerable position. I had two very young sons, and no job to help me pay for tuition, rent, and childcare. Someone told me about the Best Beginnings Scholarship, and how it would allow me to continue to pursue my education. It has been a true gift, and I am forever grateful for it. I graduated with a bachelor's degree from the College of Letters and Science with honors in Psychology. I was also accepted into graduate school and am working on the program for Addictions Counseling.

My story would not have been possible without the help I have received from my community and most notably from the peace of mind that has come with quality child care,

afforded to me only because of the Best Beginnings Scholarship. My sons continue to receive the scholarship while I am at work at a center on campus. My little boys are thriving in a quality preschool and with a happy and healthy mother. My end goal is to become a licensed addictions counselor, and to pursue my master's degree in Family and Marriage Counseling. I am proud of what I have accomplished, and words cannot fully express how grateful I am for the support I continue to receive as I become a woman capable of supporting herself and her children, as well as playing a positive role in society.

-Best Beginnings Scholarship recipient

Special thanks to our Major Funders

MT Department of Health and Human Services
Montana CACFP
Project LAUNCH
OP & WE Edwards Foundation
Greater Gallatin United Way
Elizabeth Wakeman Henderson Charitable Foundation
Park County Community Foundation
Renee Gaugler/Wells Fargo Mortgage

This report is for data collected from October 1, 2016-September 30, 2017.

This project is funded (in part) under a contract with the Montana Department of Public Health and Human Services. The statements herein do not necessarily reflect the opinion of the Department. Copies of this public document were published at an estimated cost of \$1.12 per copy, 100% of which is in accordance with Federal law and U.S. Department of Agriculture policy, this institution is prohibited from discriminating on the basis of race, color, national origin, sex, age of disability. To file a complaint of discrimination, write USDA, Director, Office of Civil Rights, Room 326-W, Whitten Building, 1400 Independence Avenue, SW, Washington, D.C. 20250-9410, or call (202) 720-5964 (voice and TDD). USDA is an equal opportunity provider and employer.



LOCAL IMPACT:



460

Bike helmets were fitted and given to area children, free of charge.

COMMUNITY PROGRAMS

At CCC, we work diligently to reduce the likelihood of serious injury or death by educating children, their families, and child care providers on critical safety measures. By offering bike helmets and child safety seat checks, we are encouraging our communities to make safety a priority for children. Additionally, we work with child care providers to develop disaster plans and drills. CCC works with other agencies to identify "Guardian Providers" who can assist first responders and care for their children in the event of a major community disaster.

6 bicycle helmet fitting events were held in the Bozeman area.

12 child safety seats were given to area families who could not afford to make this purchase.

2 certified Child Passenger Safety Technicians were available by appointment to inspect and correct child safety seat installations in Bozeman.

13 child safety seat installations were inspected and corrected at Bozeman CCC.

18 child care providers were assisted with disaster plans and/or drills.

4 child safety seat check-up events were held in Gallatin and Park counties in which over **200** car seat installations were inspected and corrected.



LOCAL IMPACT:



302,521

Nutritious meals served in child care programs. Healthy eating habits are important to teach.

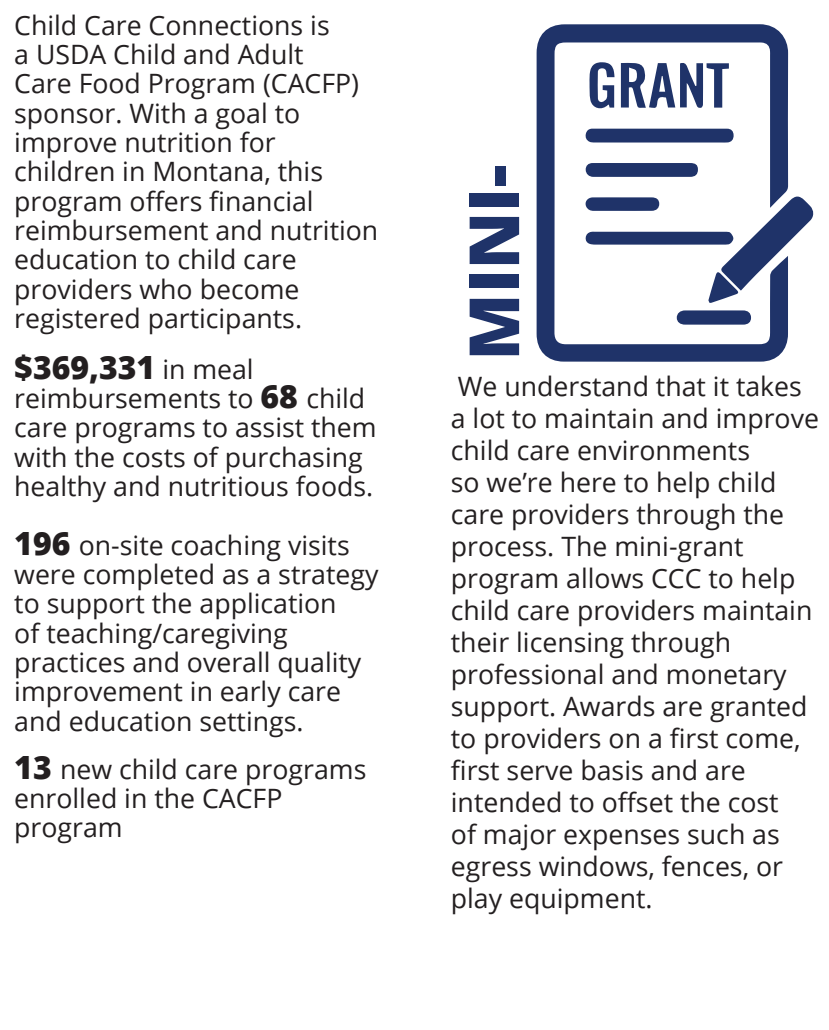
NUTRITION PROGRAM

Child Care Connections is a USDA Child and Adult Care Food Program (CACFP) sponsor. With a goal to improve nutrition for children in Montana, this program offers financial reimbursement and nutrition education to child care providers who become registered participants.

\$369,331 in meal reimbursements to **68** child care programs to assist them with the costs of purchasing healthy and nutritious foods.

196 on-site coaching visits were completed as a strategy to support the application of teaching/caregiving practices and overall quality improvement in early care and education settings.

13 new child care programs enrolled in the CACFP program



MINI-



LOCAL IMPACT:



565

Families received scholarships each month which helped them afford child care while they worked or attended school.

FAMILY SERVICES

“The Child Care Connections Mini Grant was an incredible opportunity for us to fill our classrooms with furniture and supplies we desperately needed.”

- Katie Ostberg, Little Rangers Learning Center in West Yellowstone



Montana DPHHS Child Care & Development Fund



The average cost of child care in Montana, per child age 0-4, was approximately \$7,800 in 2017. Montana's Best Beginnings Child Care Scholarship subsidizes the cost of child care and enables parents to work and attend school. Our five Eligibility Specialists process required paperwork and administer this program to Child Care Connections' (CCC) six-county region. Each specialist averages a caseload of 100 applicants, monthly.

941 children benefited from licensed, quality child care due to scholarship assistance.

7 children with special needs received assessments and accommodations which helped their child care providers afford therapeutic equipment and support.



STARS to Quality is a 5-STAR quality rating improvement system. Child care programs receive support, training, and incentives to provide and maintain quality early childhood experiences and environments. CCC provided active coaching and/or consulting to 57 programs in 2017, to achieve STAR levels.

LOCAL IMPACT:



1,623

Coaching hours spent with child care providers focused on enhancing the quality of services child care programs are providing to children and families.

PROVIDER SERVICES



Our team of seven experienced professionals offer classroom trainings, on-site coaching and learning opportunities for child care providers. These offerings are held during and after business hours to accommodate child care providers and their busy schedules. The trainings conducted by CCC are state approved and fulfill licensing requirements which improve the quality of child care available to children in our six-county region.

4,839 children received quality care from licensed child care providers.

185 active child care programs benefited from CCC services and support.

99 classroom training events, or **617** hours, available to area child care providers to ensure they meet minimum health and safety standards.

11 new child care providers attended New Provider Orientations. CCC recruits and trains child care providers to fill the critical shortage of child care in Montana.

“I am very thankful for the opportunity to improve my childcare and provide a safer place for children to 'Play and Learn.'”

- Jill Caine, Jill's Lil' Beans in Bozeman

