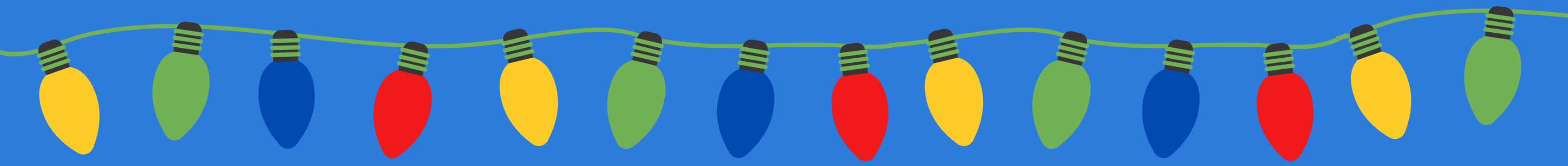


MEAGHER COUNTY HOLIDAY EVENTS



WHITE SULPHUR SPRINGS CHRISTMAS STROLL
FRIDAY, DECEMBER 3RD FROM 6 PM-9 PM



ANGEL TREE THROUGH THE SALVATION ARMY
[HTTPS://SAANGELTREE.ORG/](https://saangeltree.org/)



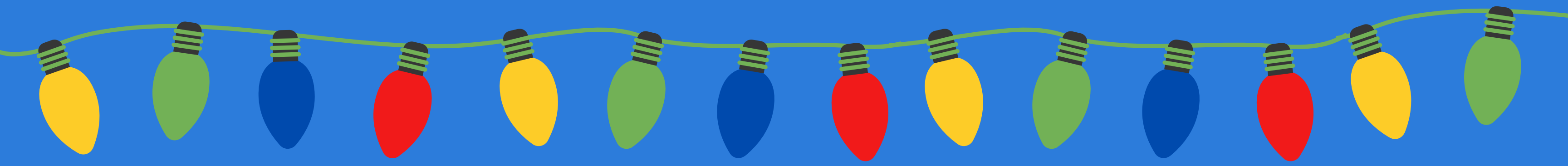
CHILD CARE
CONNECTIONS

(406) 587-7786

(800) 962-0418

CCCMONTANA.ORG

LEWIS AND CLARK COUNTY HOLIDAY EVENTS



FAMILY DAYS:

DECEMBER 4TH-5TH

ENTRY TIMES: \$4 per person ages 4 and up

- 9:30 AM • 12:30 pm
- 11 AM • 2pm

HELENA CIVIC CENTER BALLROOM

HELENA HOLIDAY MADE FAIR

DECEMBER 4-5TH FROM 10 AM- 5 PM

LEWIS AND CLARK FAIR GROUNDS



GIFT ASSISTANCE

ANGEL TREE THROUGH THE SALVATION ARMY

[HTTPS://SAANGELTREE.ORG/](https://saangeltree.org/)



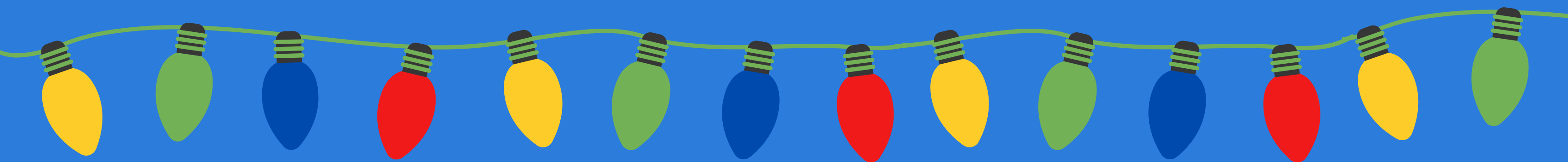
CHILD CARE
CONNECTIONS

(406) 587-7786

(800) 962-0418

CCCMONTANA.ORG

BROADWATER COUNTY HOLIDAY EVENTS



TOWNSEND CHRISTMAS STROLL

SATURDAY, DECEMBER 4TH FROM 4 PM-7 PM

THE PARADE OF LIGHTS STARTS AT 4 PM



GIFT ASSISTANCE

ANGEL TREE THROUGH THE SALVATION ARMY

[HTTPS://SAANGELTREE.ORG/](https://saangeltree.org/)



HOPE & THE HOLIDAYS (AGES 0-16)

SANTA'S HOTLINE 406-451-5312 OR

SIGN UP ONLINE AT

[HTTPS://HOPEANDTHEHOLIDAYSMT.COM/](https://hopeandtheholidaysmt.com/)



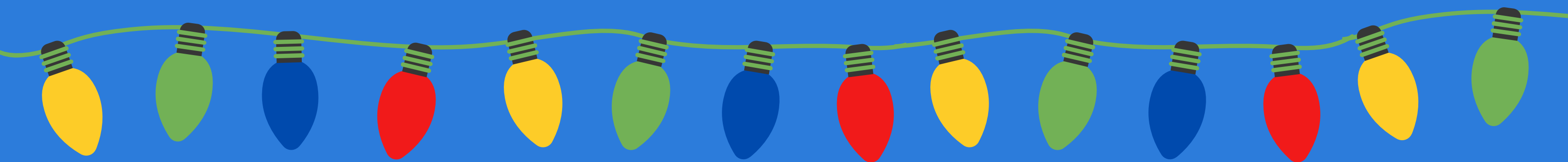
CHILD CARE
CONNECTIONS

(406) 587-7786

(800) 962-0418

CCCMONTANA.ORG

JEFFERSON COUNTY HOLIDAY EVENTS



WHITE HALL CHRISTMAS STROLL

SATURDAY, DECEMBER 11TH

- SEE SANTA AT THE LIBRARY
- THE GRINCH WILL BE AT SETTINGS



GIFT ASSISTANCE

ANGEL TREE THROUGH THE SALVATION ARMY

[HTTPS://SAANGELTREE.ORG/](https://saangeltree.org/)



HOPE & THE HOLIDAYS (AGES 0-16)

SANTA'S HOTLINE 406-451-5312 OR

SIGN UP ONLINE AT

[HTTPS://HOPEANDTHEHOLIDAYSMT.COM/](https://hopeandtheholidaysmt.com/)



CHILD CARE
CONNECTIONS

(406) 587-7786

(800) 962-0418

CCCMONTANA.ORG

PARK COUNTY HOLIDAY EVENTS



LIVINGSTON CHRISTMAS STROLL

FRIDAY, DECEMBER 3RD FROM 5 PM TO 9 PM

LIVINGSTON COMMUNITY FAIR

SATURDAY, DECEMBER 4TH FROM 9 AM TO 4 PM

ADMISSION: \$1 AND A CANNED FOOD ITEM OR \$2



LIVINGSTON SANTA ON THE FIRE TRUCK

SANTA WILL BE MAKING HIS WAY AROUND LIVINGSTON
WITH PARK COUNTY RURAL FIRE

GARDNER CHRISTMAS STROLL

THURSDAY, DECEMBER 2ND @ 4 PM

NYEF FESTIVAL OF TREES

DECEMBER 4TH @12PM



GIFT ASSISTANCE

ANGEL TREE THROUGH THE SALVATION ARMY

[HTTPS://SAANGELTREE.ORG/](https://saangeltree.org/)



HOPE & THE HOLIDAYS (AGES 0-16)

SANTA'S HOTLINE 406-451-5312 OR SIGN UP
ONLINE AT

[HTTPS://HOPEANDTHEHOLIDAYSMT.COM/](https://hopeandtheholidaysmt.com/)



CHILD CARE
CONNECTIONS

(406) 587-7786

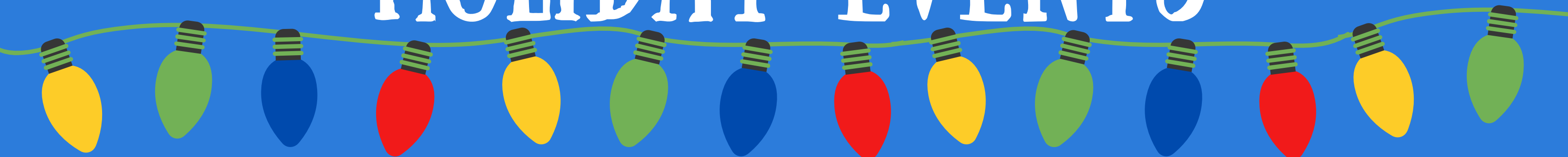
(800) 962-0418

CCCMONTANA.ORG

GALLATIN COUNTY

(BOZEMAN AND BELGRADE)

HOLIDAY EVENTS



BOZEMAN CHRISTMAS STROLL

SATURDAY, DECEMBER 4TH FROM 4:30 PM TO 7:30 PM

BELGRADE TRUCK VILLAGE

AT GALLATIN SPEEDWAY

FRIDAY, DECEMBER 10TH AT 5:30

BELGRADE CHRISTMAS CONVOY

SATURDAY, DECEMBER 11TH AT 6 PM

MAP OF THE ROUTE ON BELGRADE COMMUNITY COALITION FACEBOOK PAGE

BELGRADE HOLIDAY LIGHT PARK

LOCATED BEHIND THE BELGRADE SENIOR CENTER
OPEN EVERY NIGHT STARTING NOV. 21ST
THROUGH DEC.



HOPE & THE HOLIDAYS (AGES 0-16)

SANTA'S HOTLINE 406-451-5312 OR SIGN UP ONLINE
AT [HTTPS://HOPEANDTHEHOLIDAYSMT.COM/](https://hopeandtheholidaysmt.com/)



GIFT ASSISTANCE

ANGEL TREE THROUGH THE SALVATION ARMY
[HTTPS://SAANGELTREE.ORG/](https://saangeltree.org/)



CHILD CARE
CONNECTIONS

(406) 587-7786

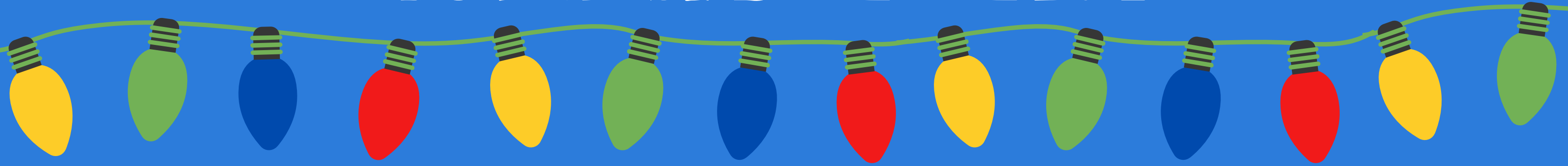
(800) 962-0418

CCCMONTANA.ORG

GALLATIN COUNTY

(THREE FORKS, WEST YELLOWSTONE AND MANHATTAN)

HOLIDAY EVENTS



THREE FORKS CHRISTMAS STROLL

FRIDAY DECEMBER 11TH AT 6PM

WEST YELLOWSTONE CHRISTMAS STROLL

SATURDAY DECEMBER 18TH FROM NOON TO 9PM

WEST YELLOWSTONE KIDS 'N' SNOW

REOCCURRING EVENT AT THE GRIZZLY AND DISCOVERY CENTER

- DECEMBER 18TH
- FEBRUARY 5TH
- JANUARY 8TH
- MARCH 5TH

MANHATTAN CHRISTMAS STROLL

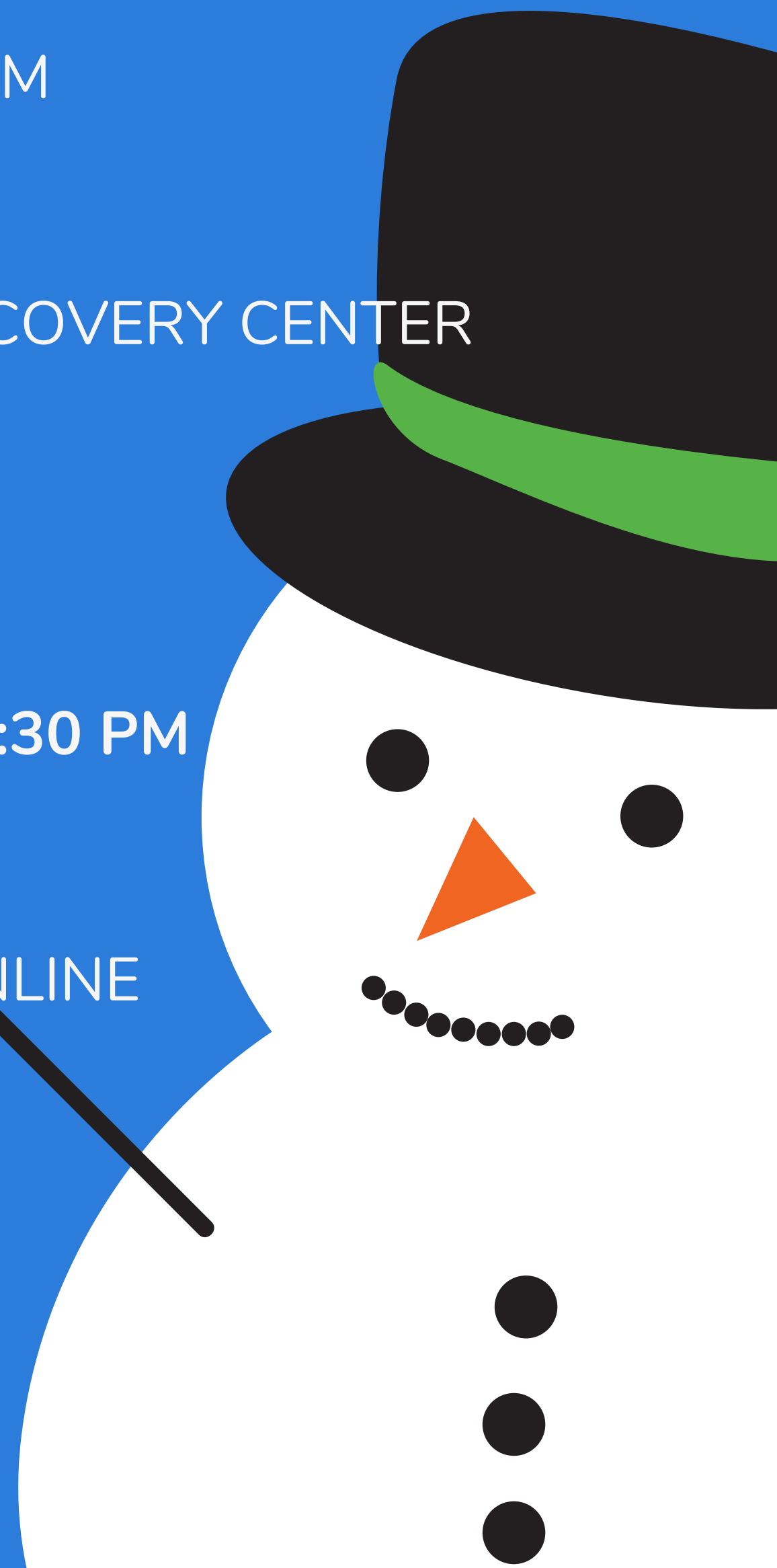
THURSDAY, DECEMBER 9TH FROM 3:30 PM TO 7:30 PM

HOPE & THE HOLIDAYS (AGES 0-16)

SANTA'S HOTLINE 406-451-5312 OR SIGN UP ONLINE
AT [HTTPS://HOPEANDTHEHOLIDAYSMT.COM/](https://hopeandtheholidaysmt.com/)

GIFT ASSISTANCE

ANGEL TREE THROUGH THE SALVATION ARMY
[HTTPS://SAANGELTREE.ORG/](https://saangeltree.org/)



CHILD CARE
CONNECTIONS

(406) 587-7786

(800) 962-0418

CCCMONTANA.ORG